



KALU LI HE JOA

Selected Works

TABLE OF CONTENTS

4

ONE SPACE MANY WORKSTYLES

Office Project



12

MAKERSPACE FOR STEAM LEARNING

Education Project



20

INHABITING THE UNINHABITABLE

Dwelling Project



ONE SPACE MANY WORKSTYLES

INT-401-01 Design Studio IV - Prof. Caleb Crawford - Office Project

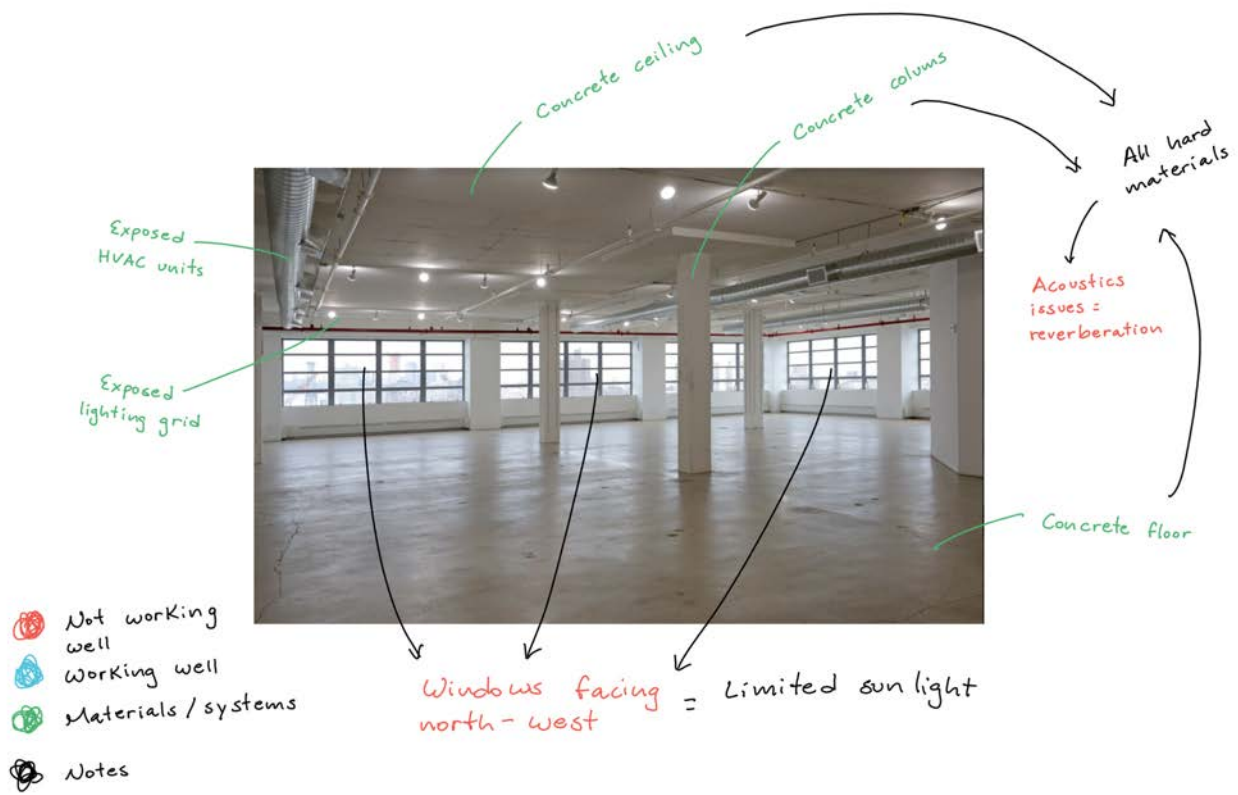
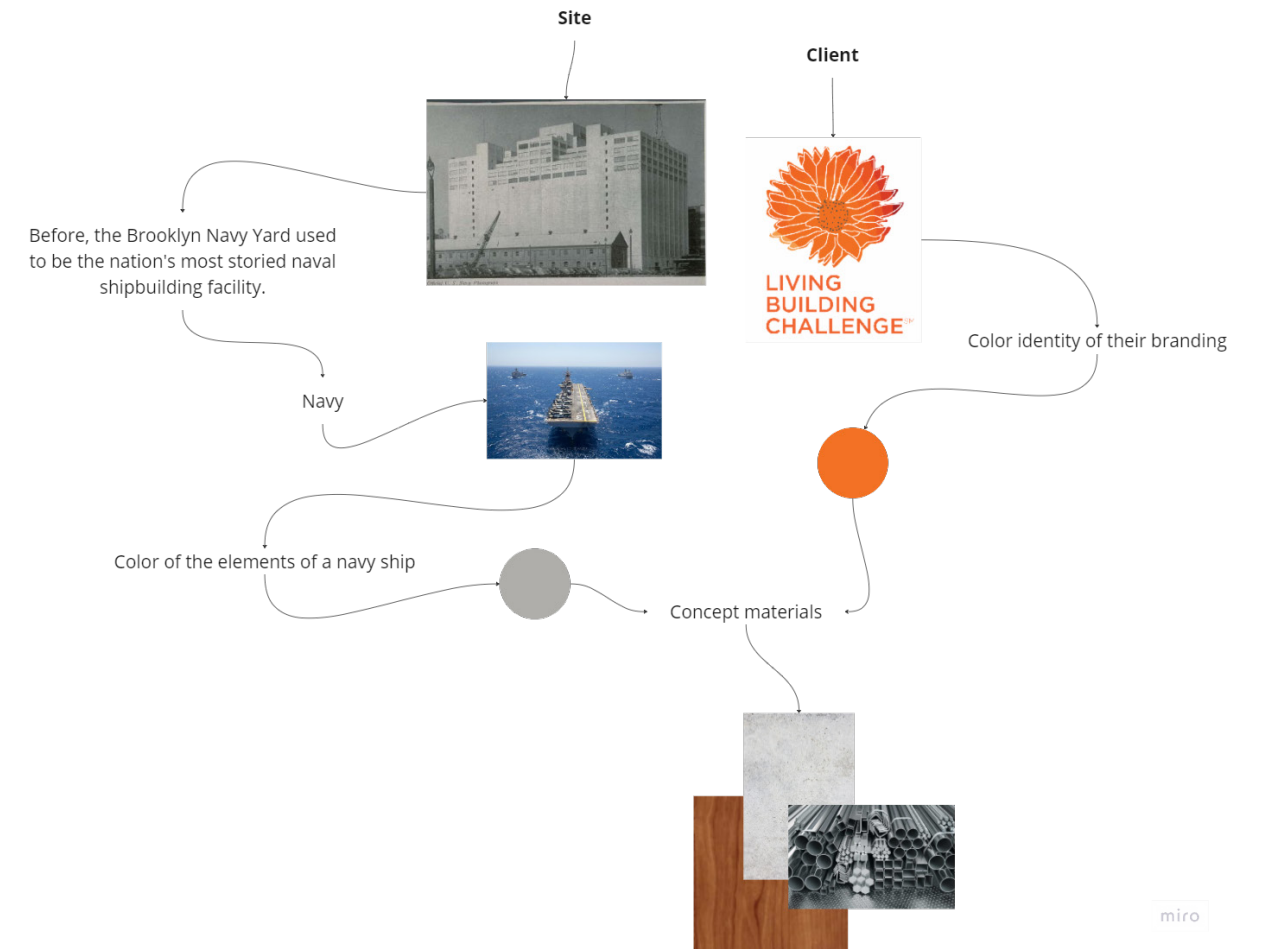
The post-pandemic office environment has proven that employees are happier and more productive if they have flexibility and control in the way they work. This project for the International Living Future Institute seeks to create an office environment where employees can choose workspaces according to their work style, allowing them more flexibility and comfort in the way they produce. Moreover, to tackle the goals of the Living Building Challenge, we are reimagining the office space by bringing exteriority qualities to the interior space, so employees can have a feeling of working outdoors while being under the roof.



141 Flushing Ave, Brooklyn, NY 11205.

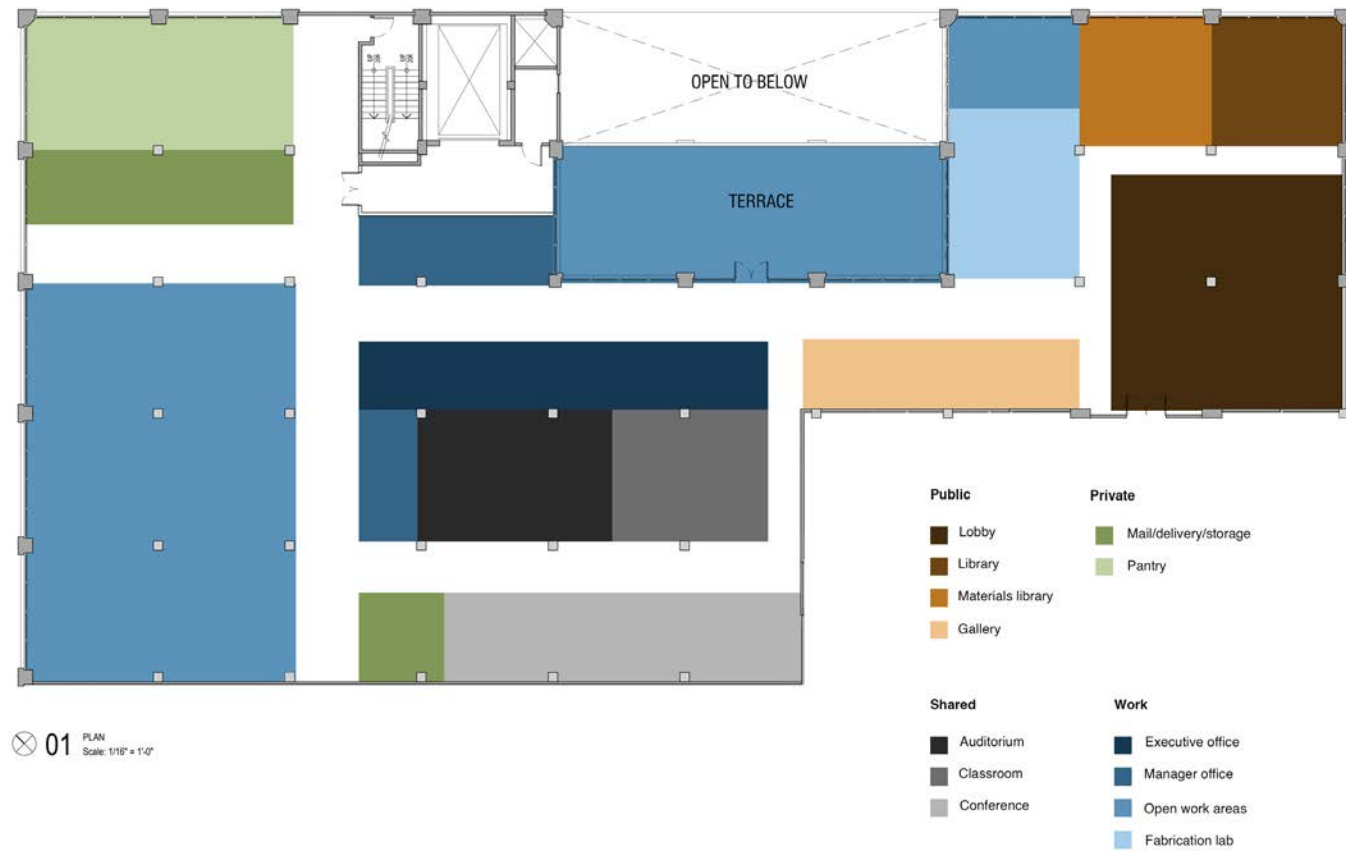


Building 77, Brooklyn Navy Yard.



Site Analysis. 15th floor of Building 77.





Space planning diagram



Lobby + library



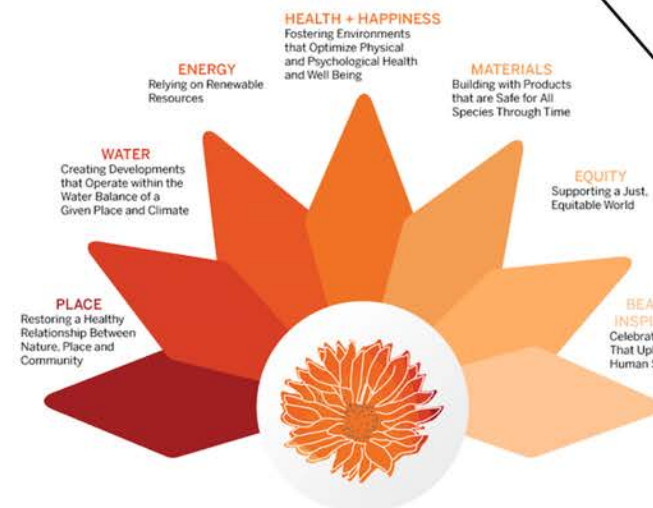
Open work areas



Biophilic design

Accesible design

Locally sourced materials



No Red List materials

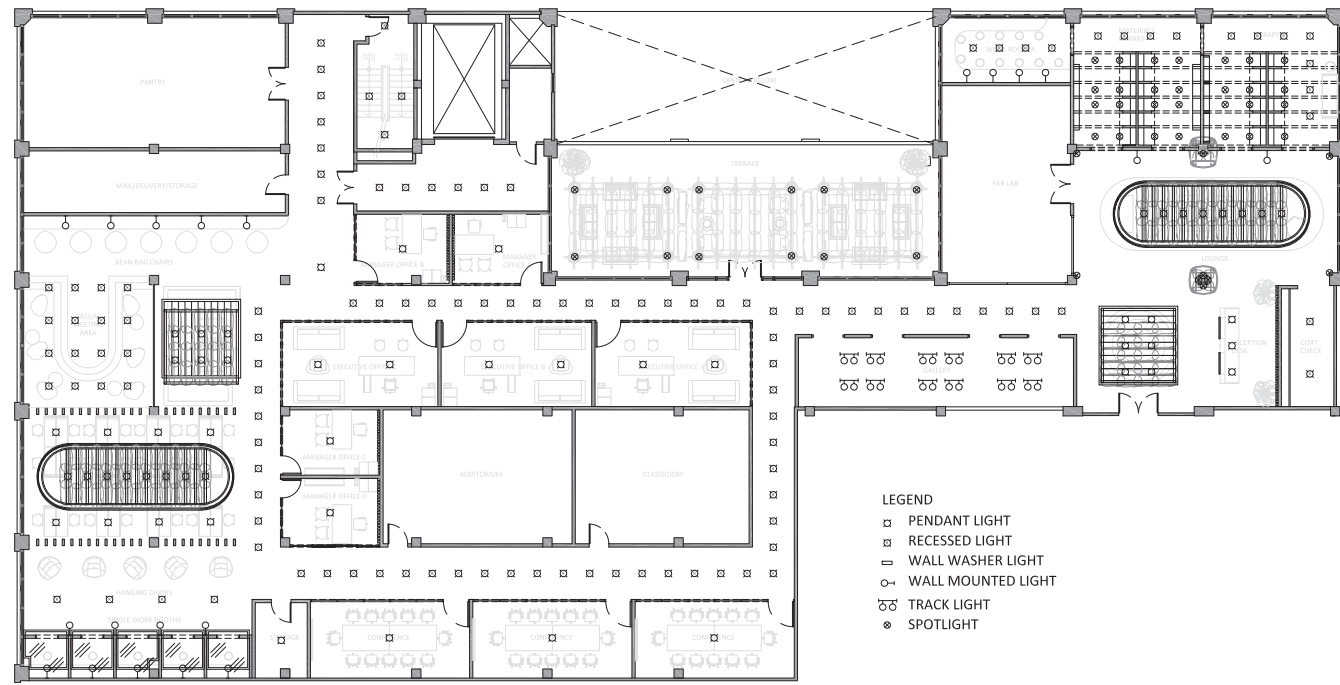
Operable windows for controllable fresh air and ventilation

Daylight control

Access to nature

Flexible work options





⊗ 02 RCP
Scale: 1/16" = 1'-0"



Lounge



Plan view of roof



Library



Casual meeting area



Manager office



Single work booths

MAKERSPACE FOR STEAM LEARNING

INT-401-03 Design Studio V - Prof. Keena Suh - Education Project

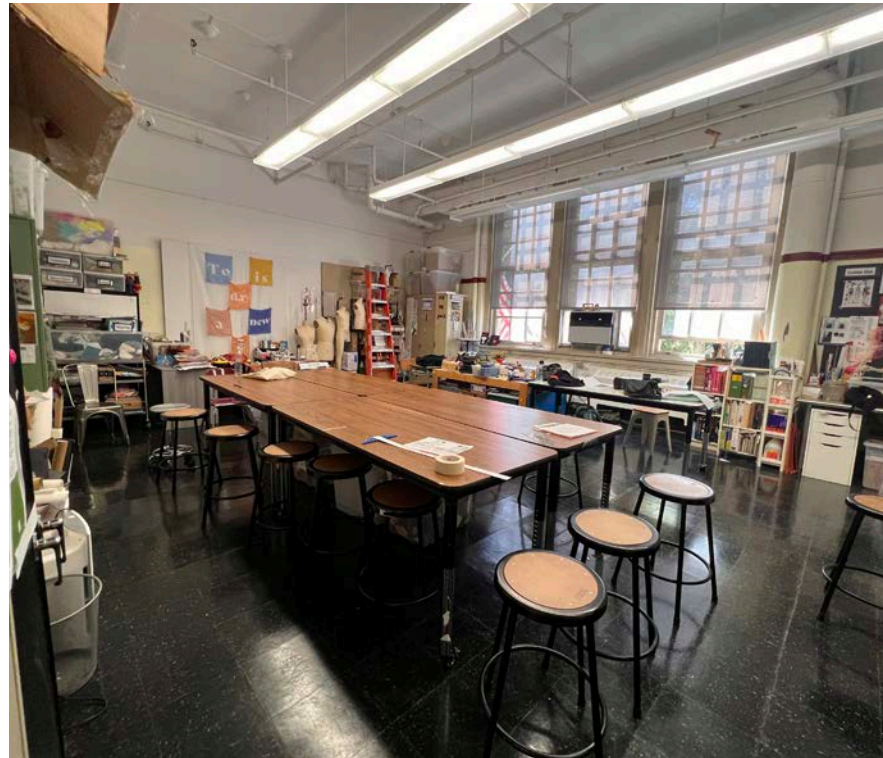
“Makerspace for STEAM learning” aims to design a learning environment that supports the new curriculum at Forsyth Satellite Academy, both in space and community. By creating an open floor plan, the boundaries between each discipline are eliminated to foster transdisciplinary education and collaboration. Through the use of resilient materials across all planes, such as homasote and self-healing surfaces, students have the freedom to be as creative and bold as they want and make anywhere a space for learning and making. Color as my main concept uses red, blue, and yellow to represent the existing art, math, and science rooms respectively. The space is a gradient of colors where the shared space between these three rooms is a bomb of colors resulting from the merging of these disciplines, each represented by a primary color.



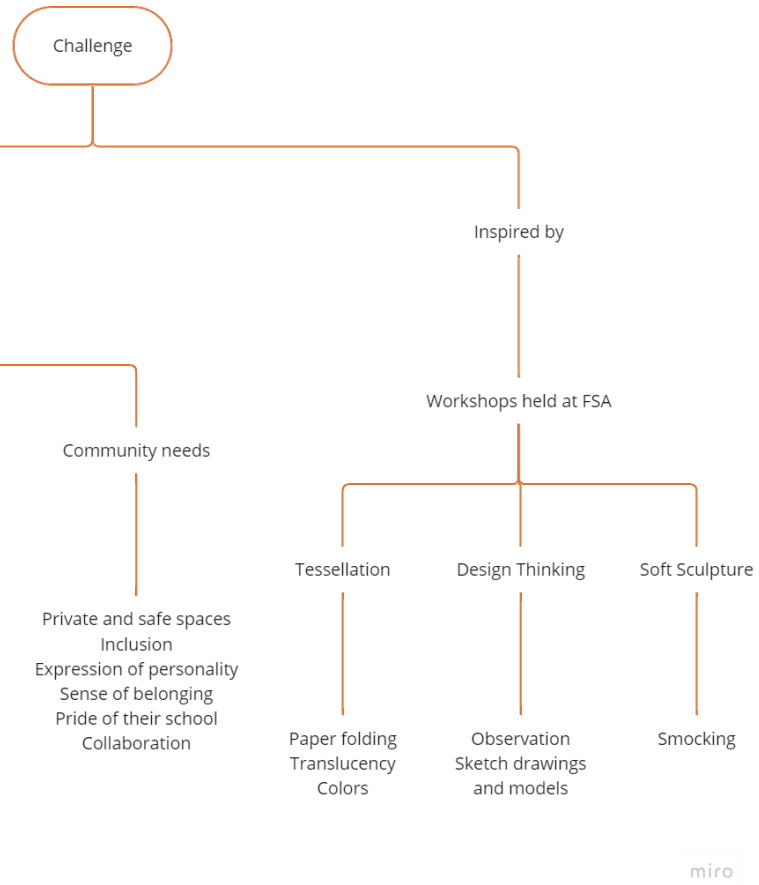
198 Forsyth St, New York, NY 10002.

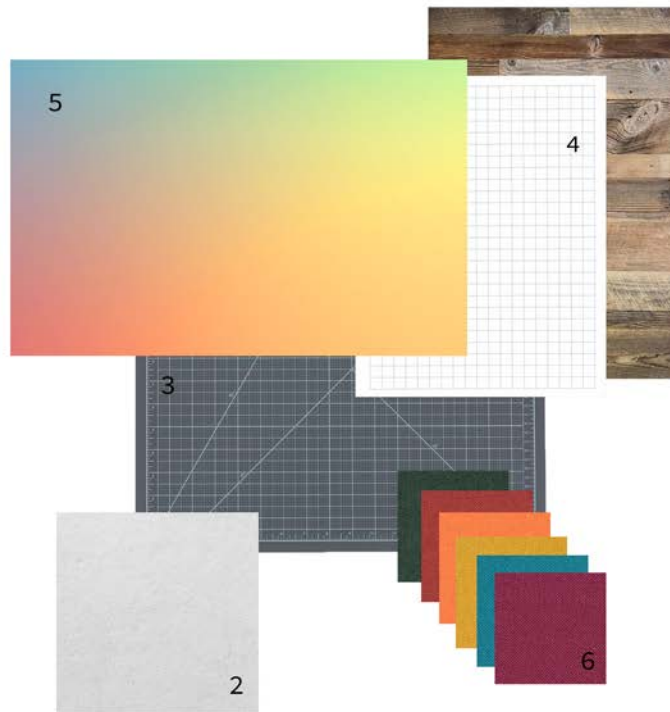


Forsyth Satellite Academy.



Site. 2th floor of FSA.





1. Reclaimed wood
2. Homasote
3. Self-healing cutting surface
4. Grid dry erase whiteboard surface
5. Linoleum floor
6. Resilient textile by Maharam



1. Ceiling grid system by busSTRUT
2. Cushioned modular seatings
3. Workbench with soft partitions and built-in storage
4. Makerspace workbench by CEF
5. Reclaimed wood floating shelf



1. Movable partitions with a dry-erase surface for writing or quick sketching.
2. Workbenches with integrated storage and magnets to attach the stools for easy clean-up and transport.
3. Floating shelves for display of students' 3D works.



4. Books exchange.
5. Cubbies for storage of students' belongings.
6. Homasote wall finish for pin-ups.
7. Shared workbench that serves as movable partition. It has built-in storage space, casters, peg-boards and smart screens.



8. Ceiling grid system for lighting and display of students' 2D work.
9. Built-in units for display of students' 3D works.
10. Padded and upholstered modular seatings.



Ceiling

Lighting and display grid system

Floating shelves

Furniture


New interior walls + movable partitions

Existing walls and columns + new flooring

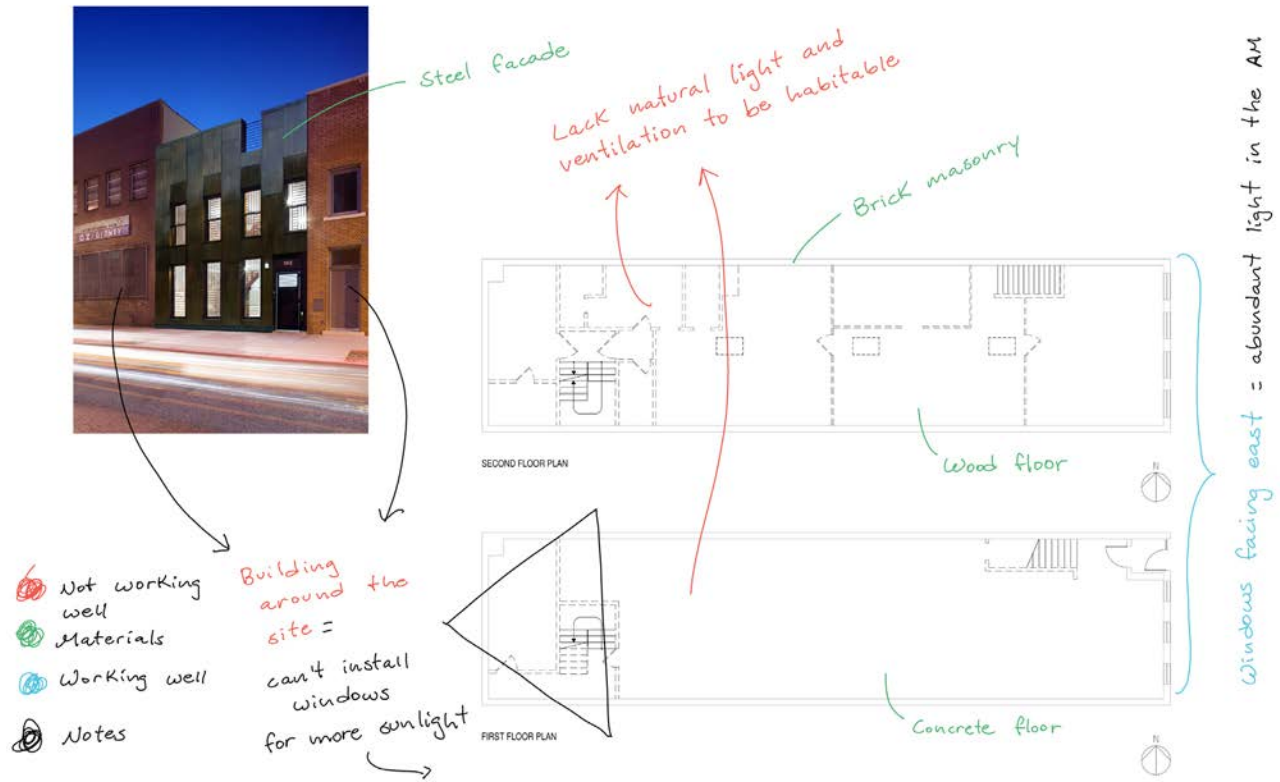


INHABITING THE UNINHABITABLE

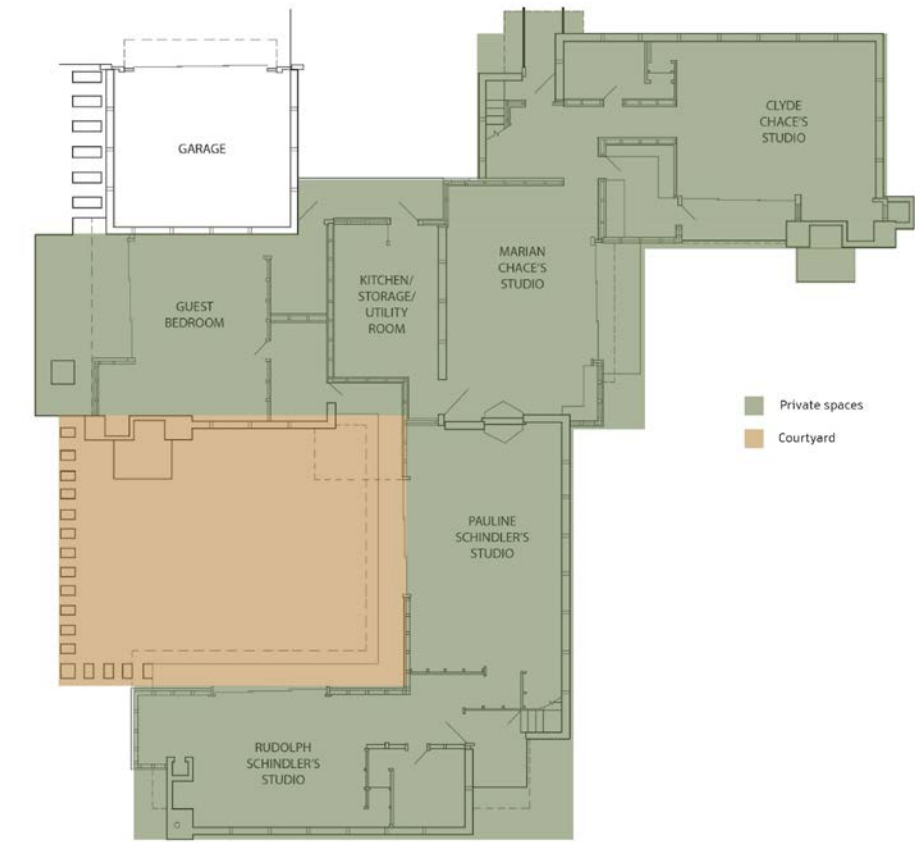
INT-301-01 Design Studio III - Prof. Anne Coggan - Dwelling Project



This project is a two story dwelling for a family of six: a couple, their two kids and their elder parents who occasionally stays over. Originally a factory, the goal is to transition from a cold, inorganic and manmade space to a place where life can grow and inhabit a previously uninhabitable space.



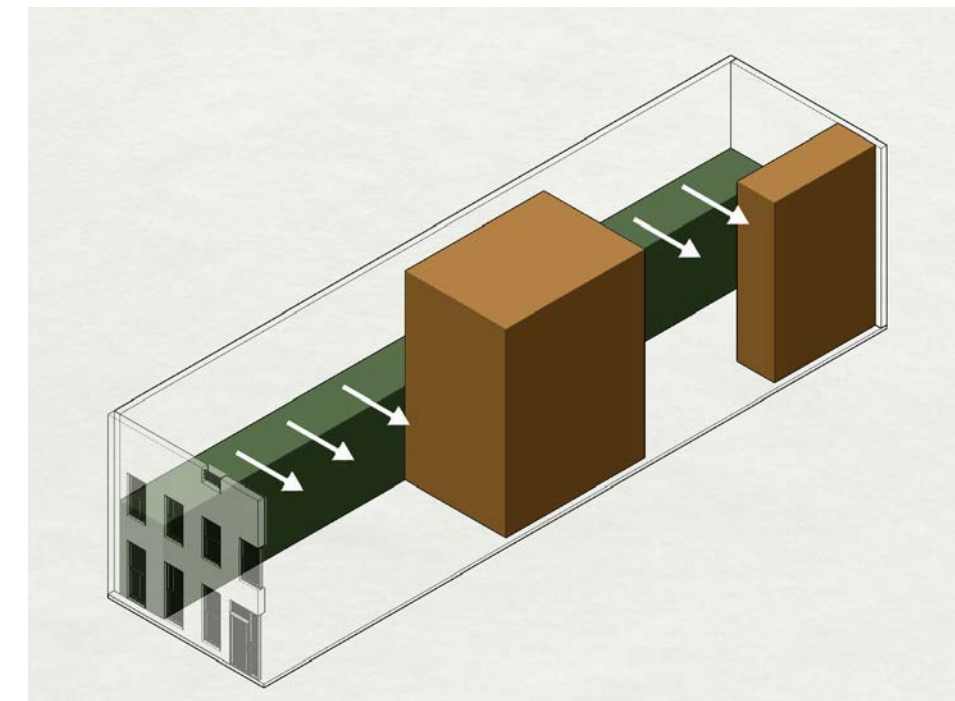
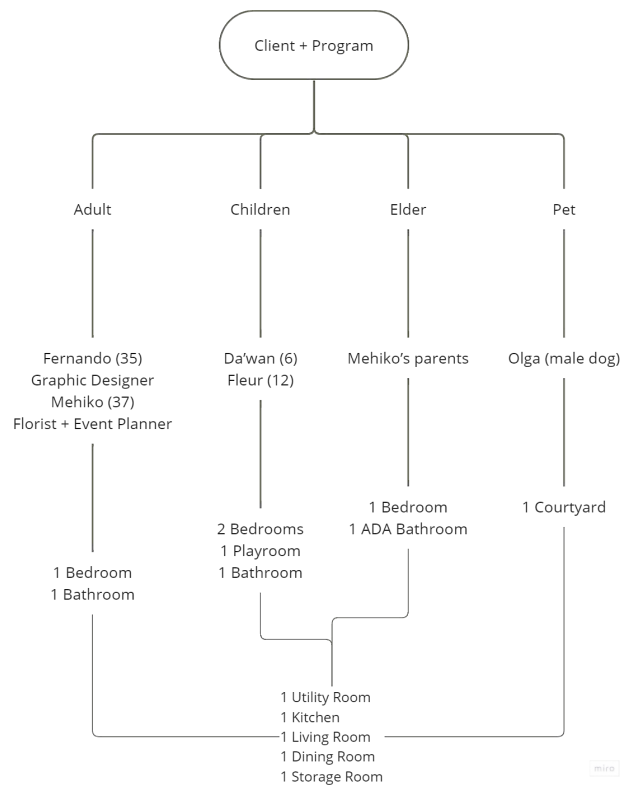
Site Analysis. Existing demolition plan provided by Pratt Institute.



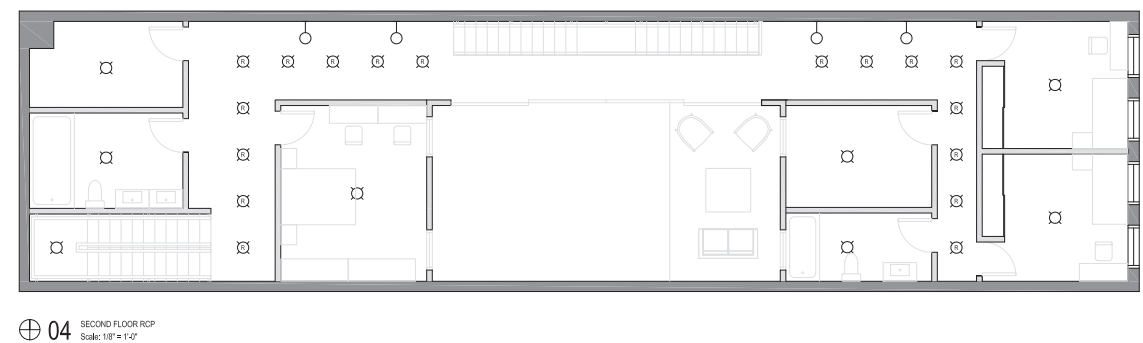
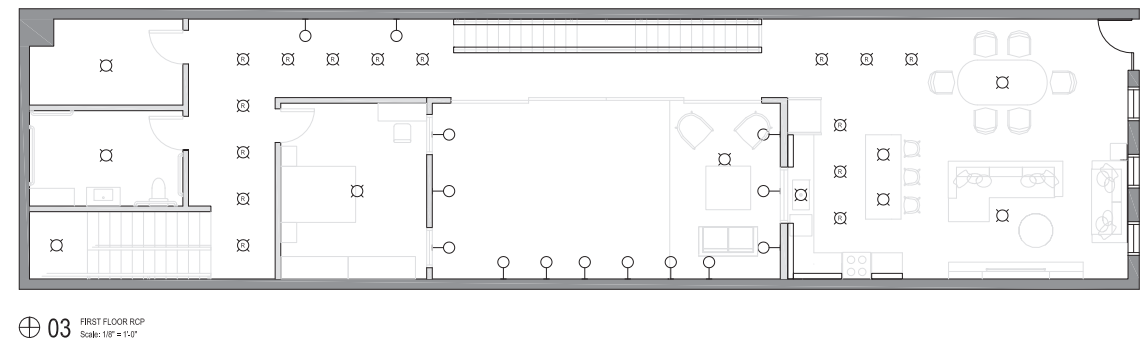
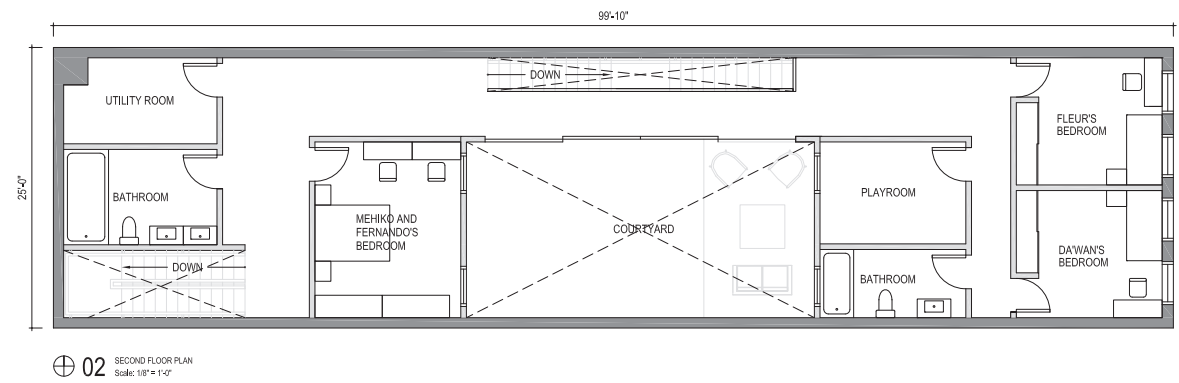
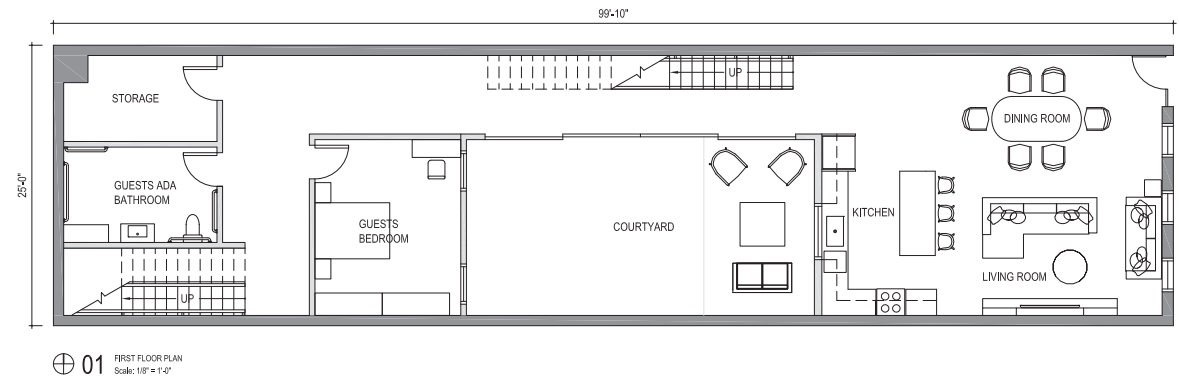
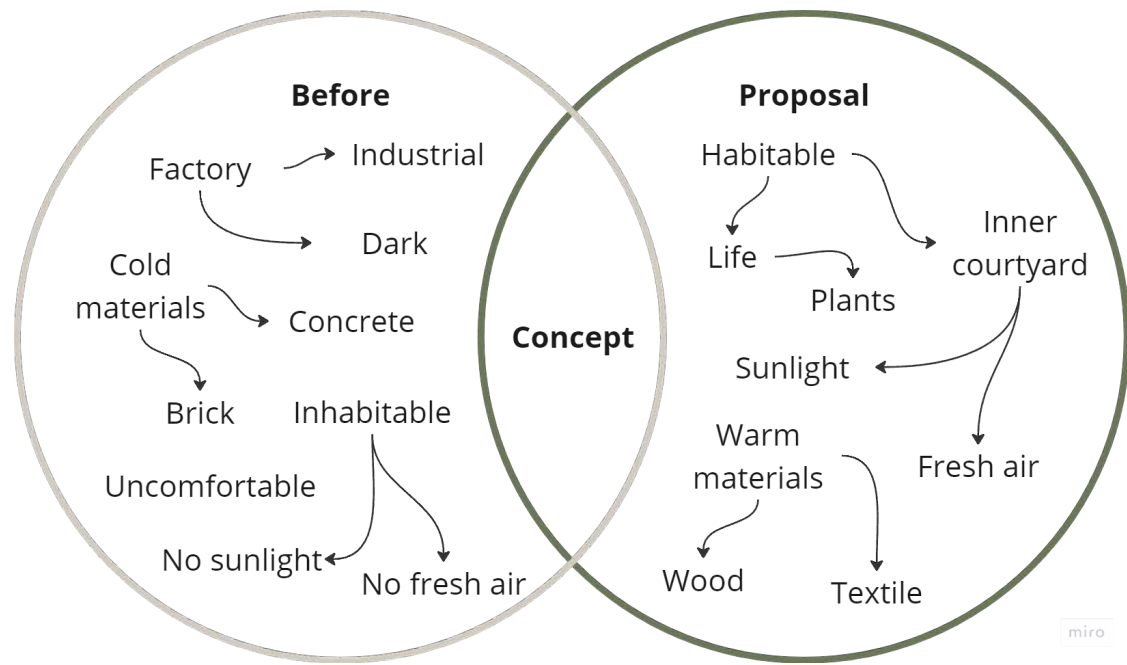
Schindler House. Floor plan by Symon Tiansay.



262 Bond St, Boerum Hill, Brooklyn, NY.



Parti of this project.



- LEGEND
- PENDANT LIGHT
 - ⊠ RECESSED LIGHT
 - ▬ STRIP LIGHT
 - WALL MOUNTED LIGHT



1. Black marble
2. Reclaimed wood
3. Ash wood planks
4. Chevron ash wood
5. Modern black door handle
6. Black minimalist pendant light
7. Wishbone dining chair
8. Walnut oval dining table
9. Concrete table lamp
10. Neutral modern sofa



